

# Flatbed Tape Laminator



# Index

1. Overview machine
2. Operation steps
3. Control Panel
4. Package
5. Questions & remarks

# Overview machine

## NEW

### GENERAL

Product width:	1400mm (max.)
Product length:	2200mm (max.)
Product thickness:	10mm (max.)
Process speed:	0 - 5m/min
Machine length:	3000mm
Machine width:	2030mm
Machine height:	1450mm
Power consumption:	500W (max.)
Weight machine:	490kg

### LAMINATOR

Roll diameter:	90mm
Roller surface:	Blank or Silicone sleeve
Nip pressure:	1 N/mm (max.)
Nip opening:	40mm (max.)
Nip pressure readout:	Yes, with 3 indication LED's
Nip pressure input:	Optional
Nip adjustment:	Button electric

### WINDING UNIT

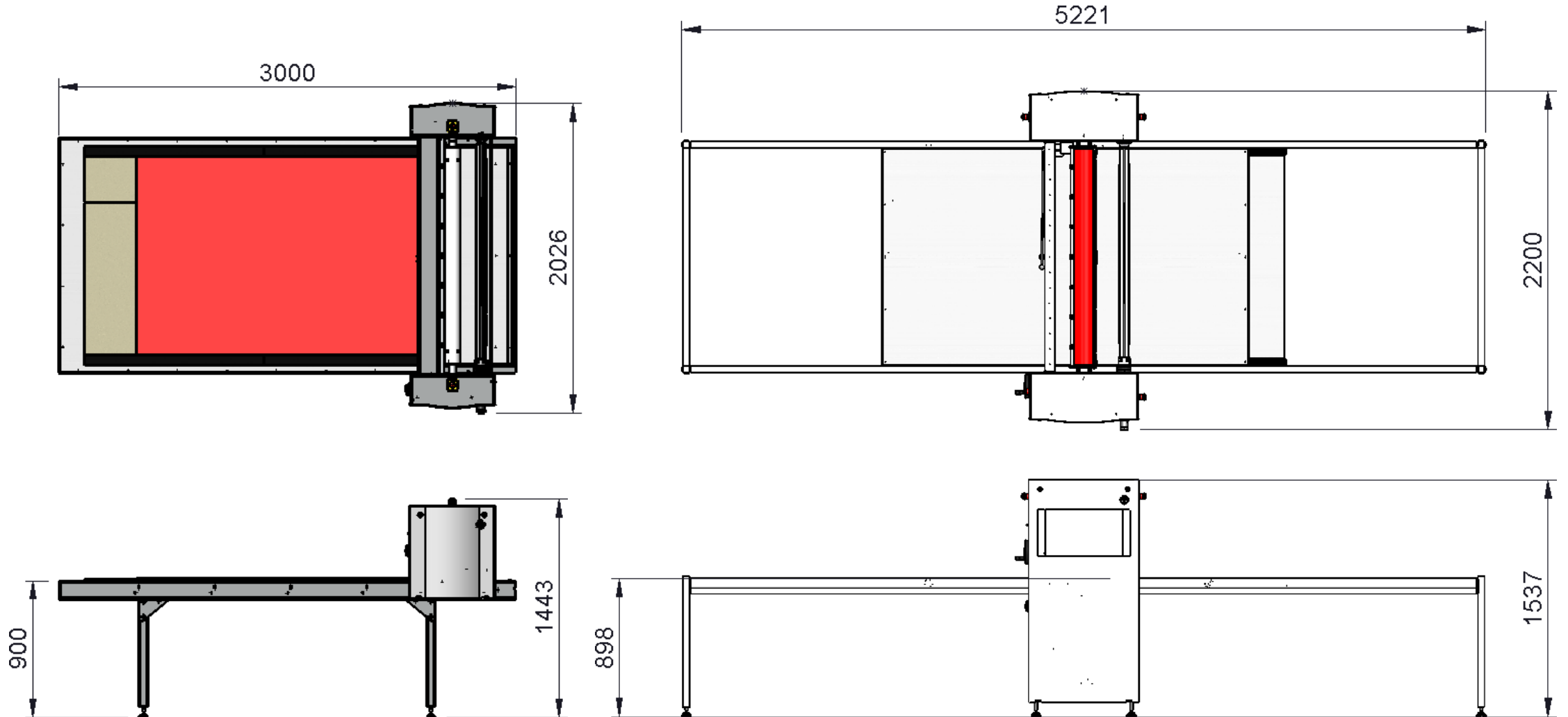
Shaft type:	Autogrip with Swing Arm
Shaft diameter	3" (76mm)

### CUTTING

Cutting width:	1400mm (55")
----------------	--------------



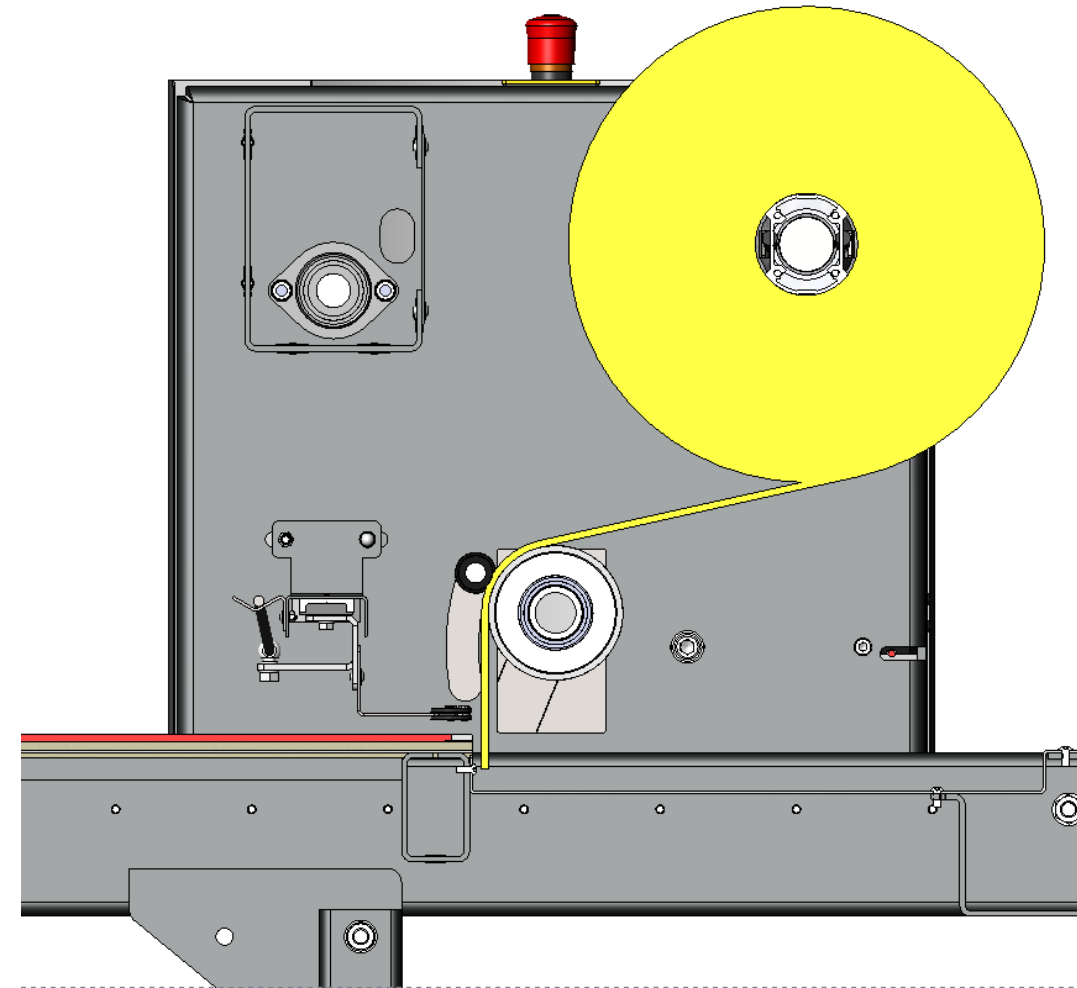
# Overview machine



# Operation steps

## Start cycle

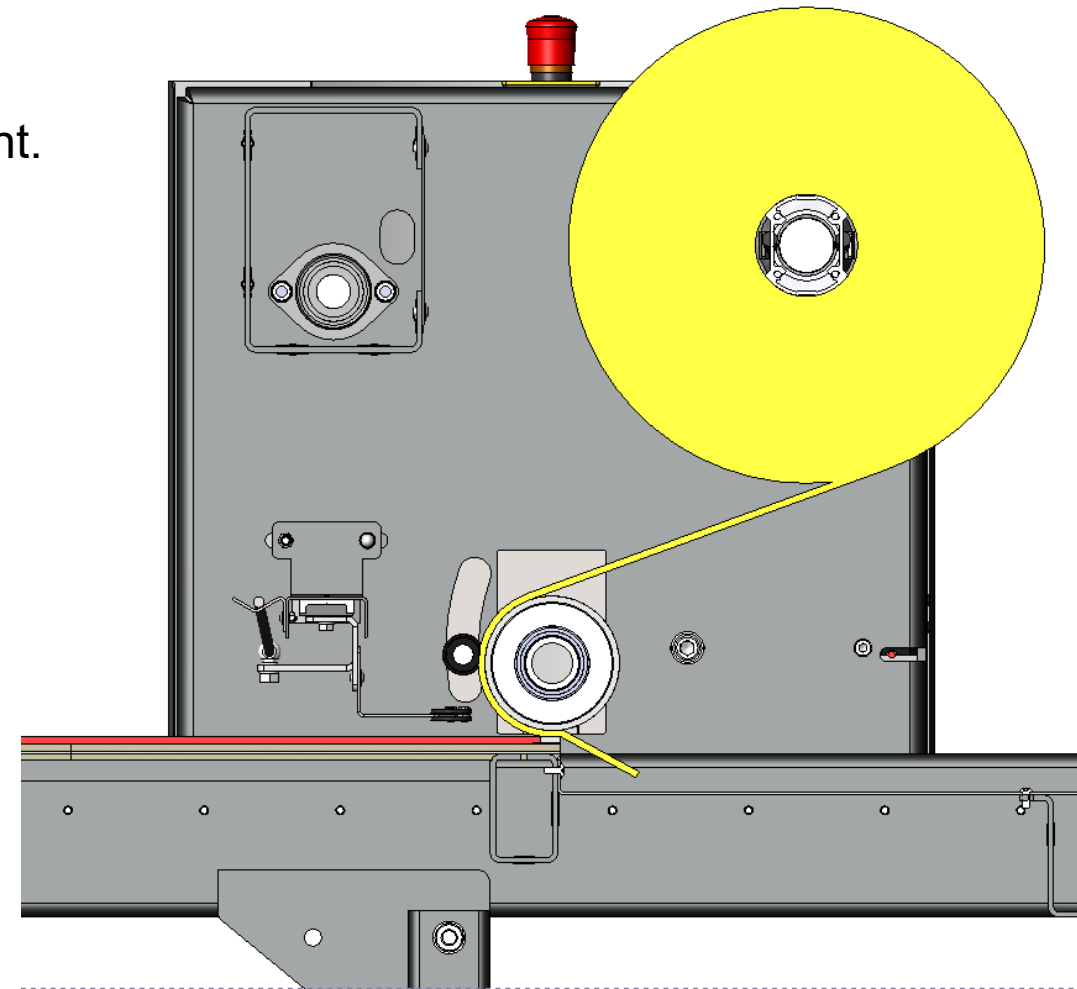
- Film hangs down
- Sheet is positioned against strip



# Operation steps

## Start lamination cycle

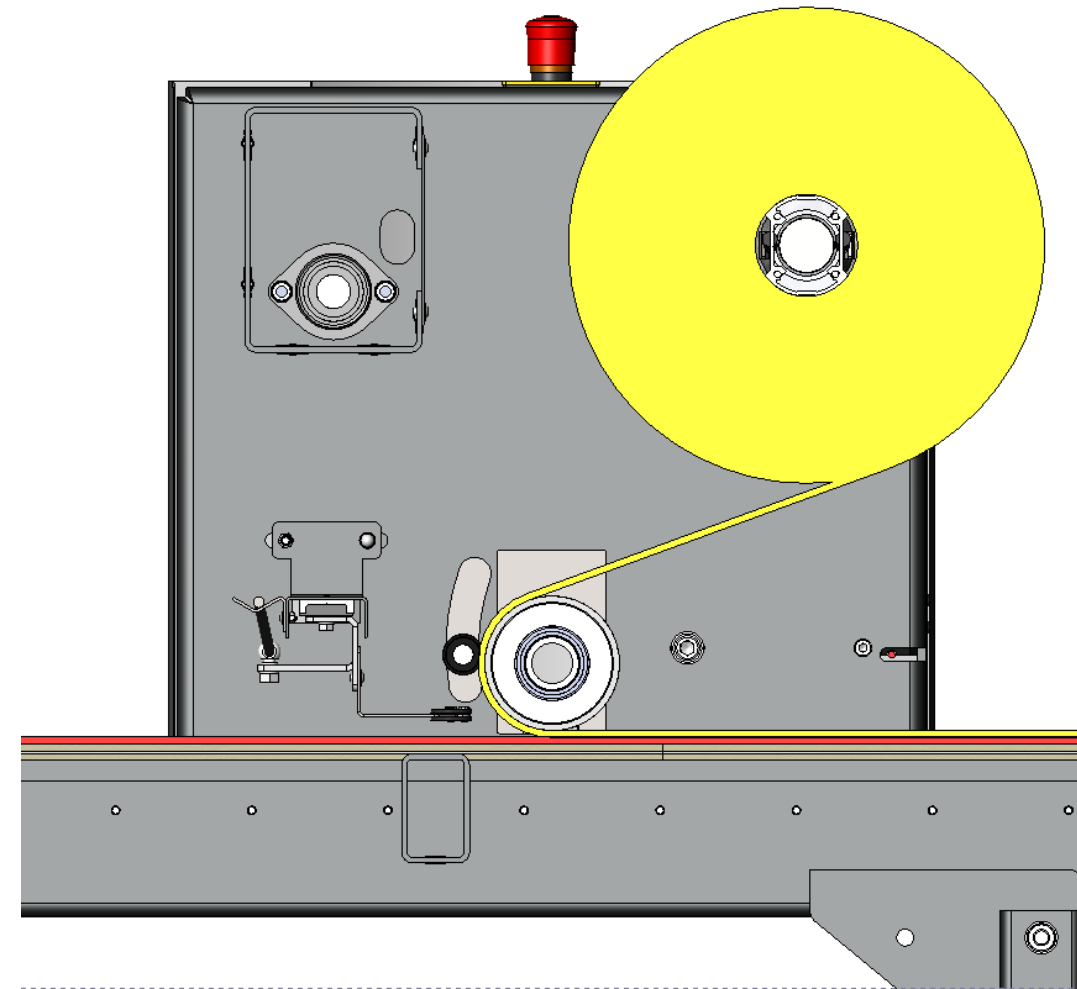
- Film is laminated on the strip and front sheet
- Roller is moved down automatic button  
Roller is lowed to the correct pressure by dial height adjustment.



# Operation steps

## Middle lamination cycle

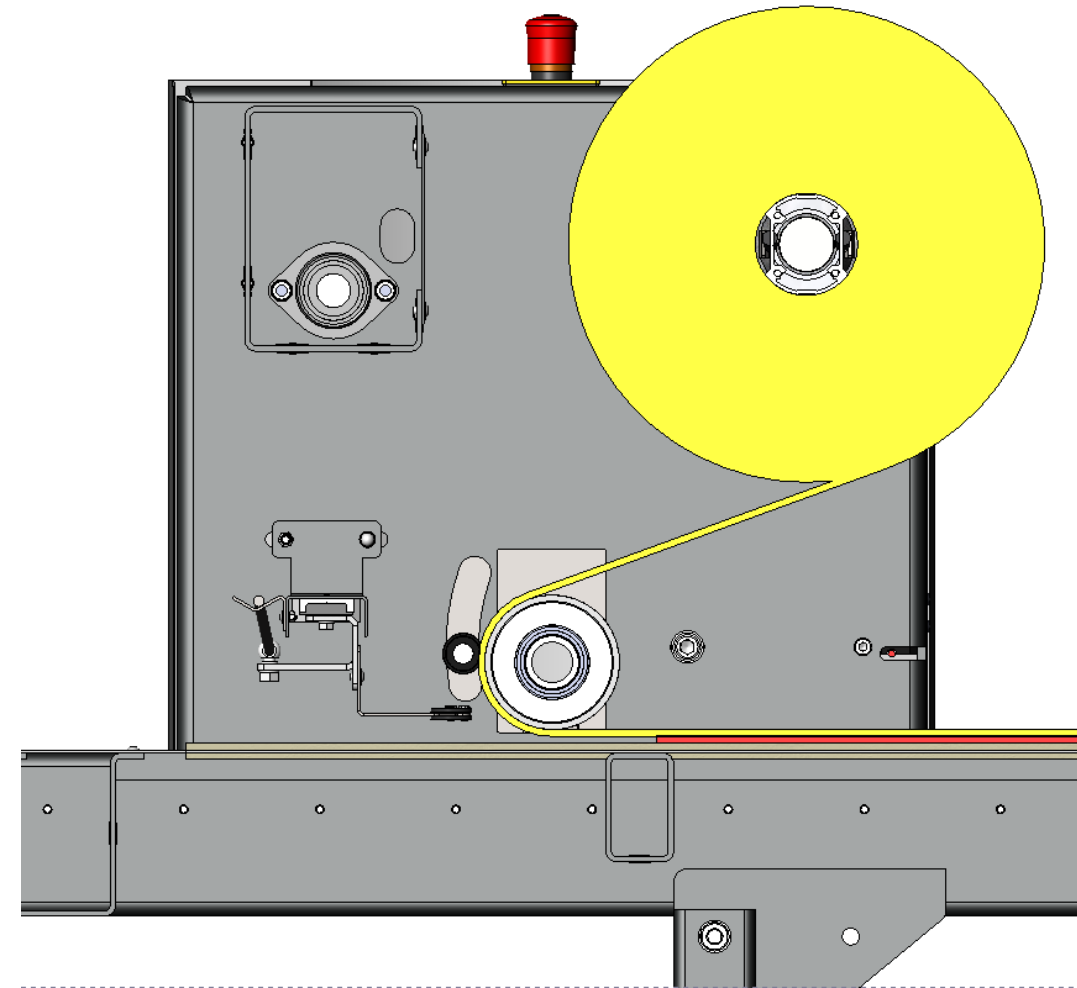
- Film is laminated on the sheet
- Operator must hold laminating button during cycle



# Operation steps

## Finish lamination cycle

- Film is laminated beyond sheet and stopped

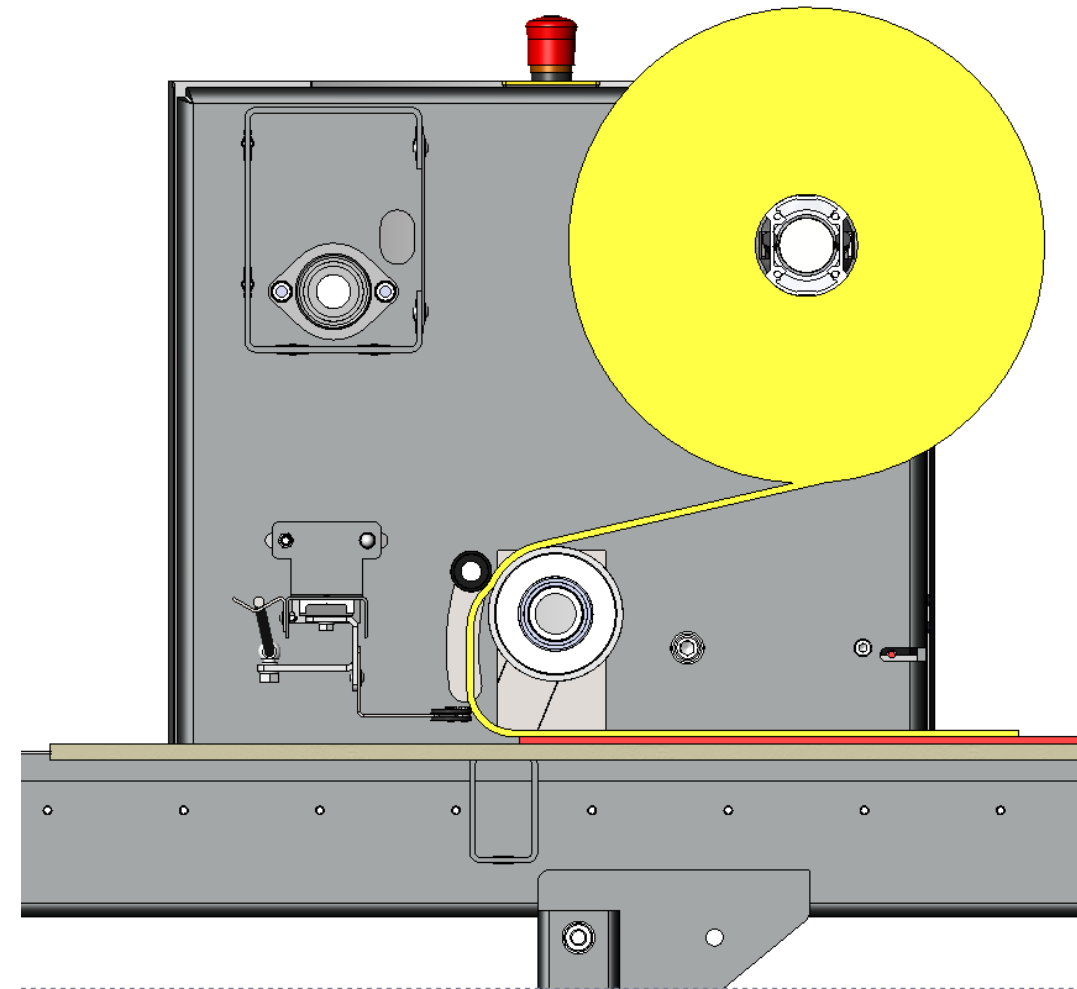




# Operation steps

## Start cutting cycle

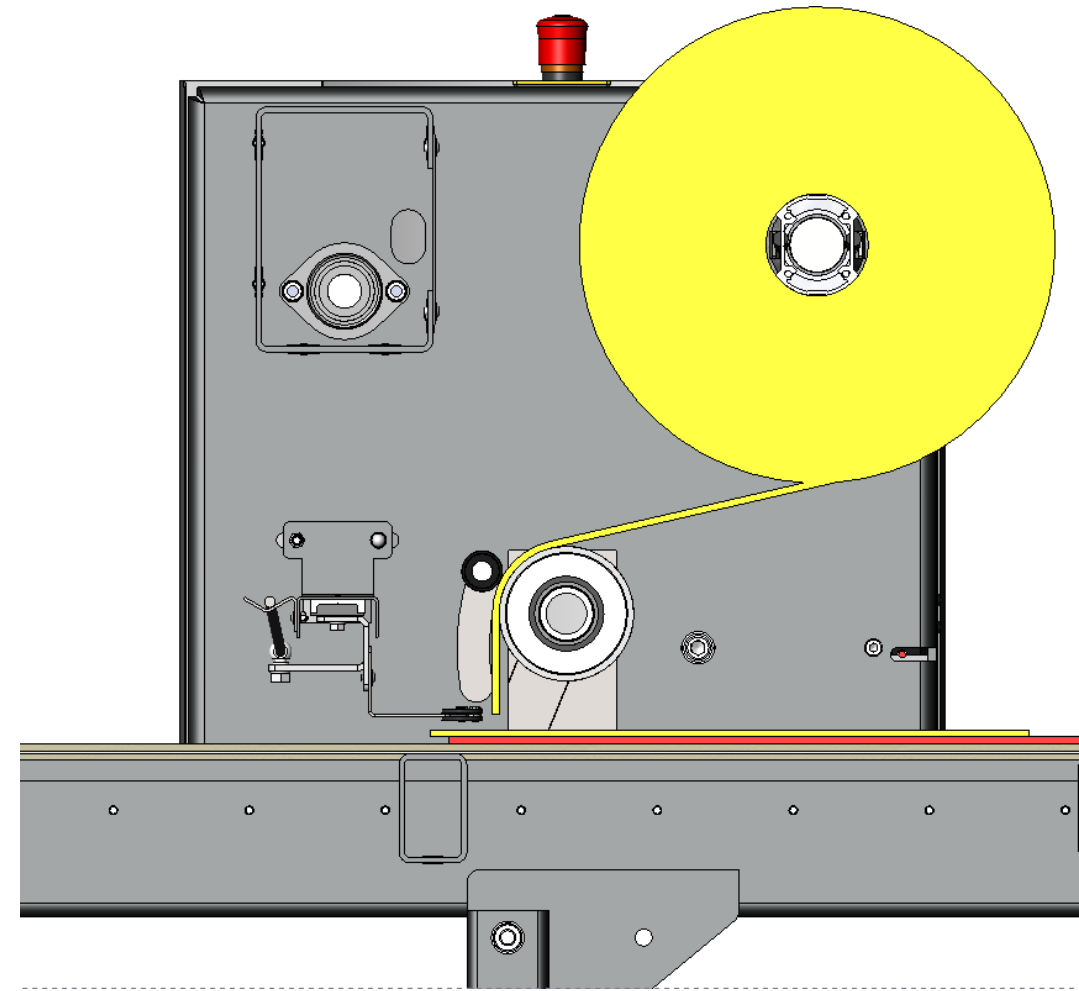
- Operator presses 'cut move button'
- Roller moves up
- Machine moves determined distance back
- Operator cuts the film manually



# Operation steps

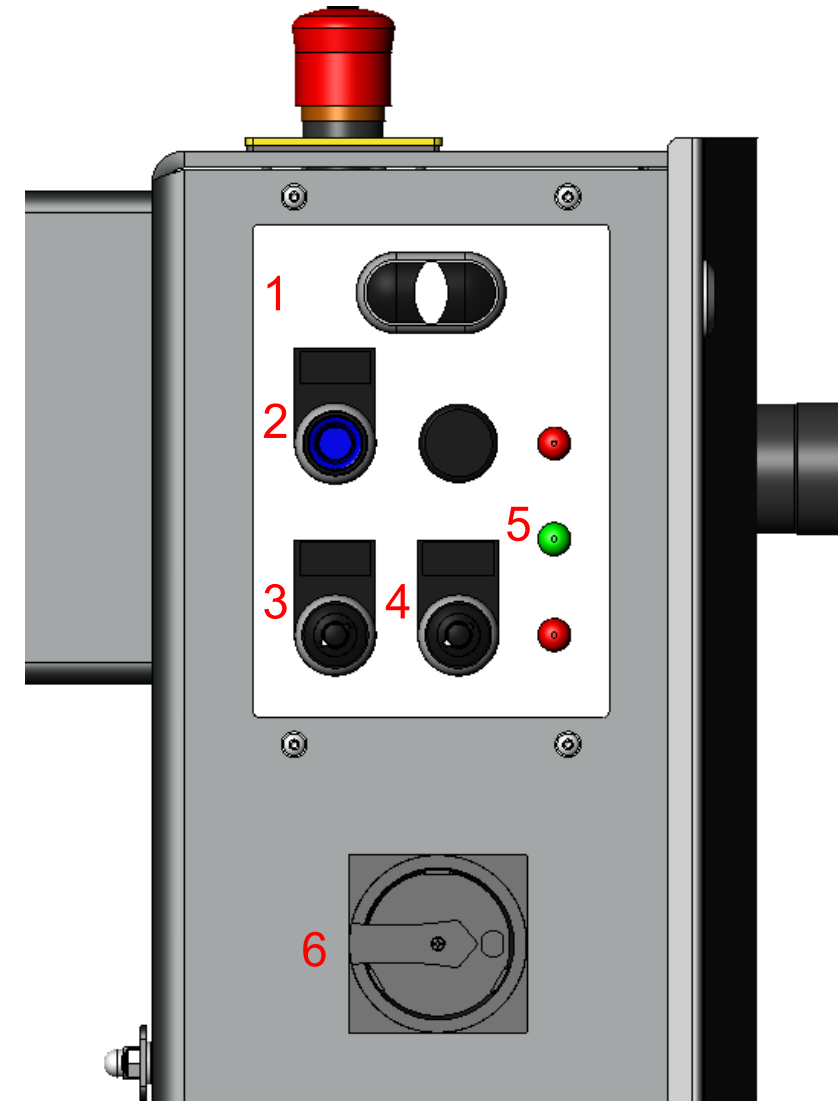
## End cutting cycle

- Film is cut
- Operator presses holds back button 1 second
- Machine moves back automatically to starting position



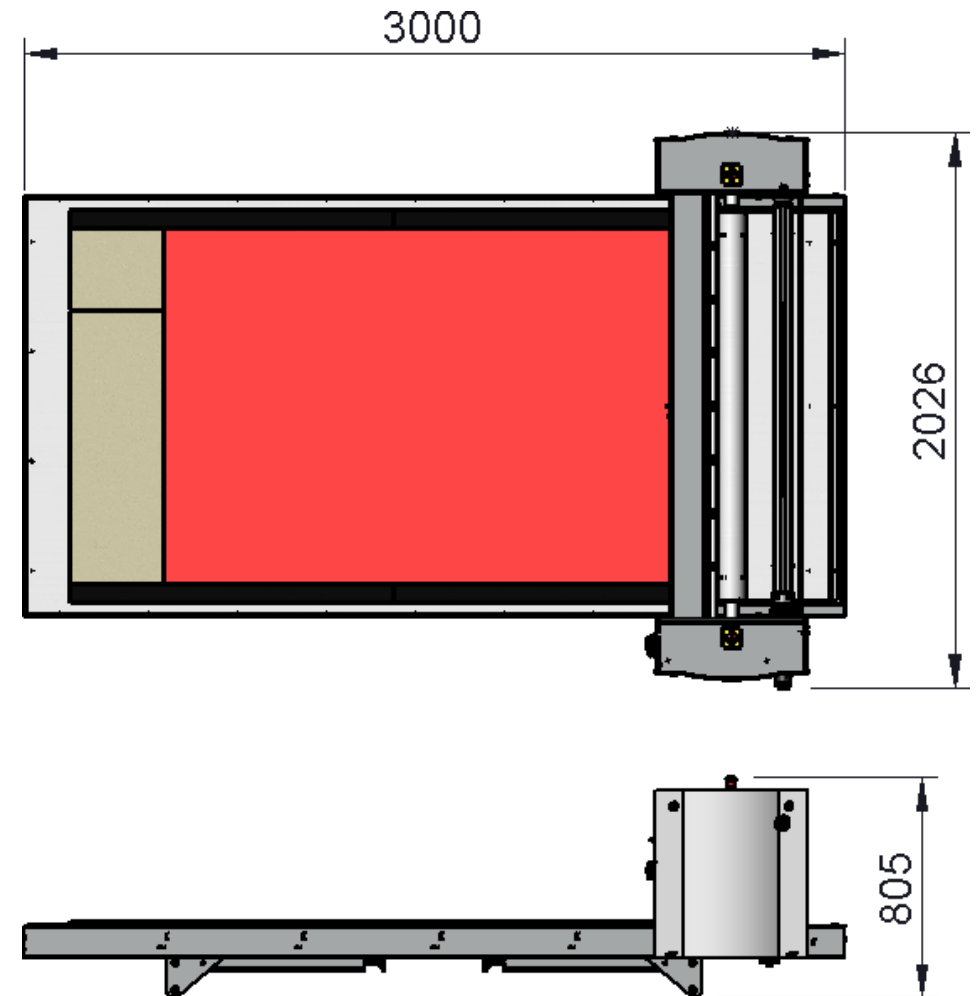
1. Movement forward / backward button
2. Lamination roller up
3. Lamination pressure / roller height
4. Lamination speed
5. Indication LED's
6. Main switch

## Control panel



- Expected size package 3100x2100x950 (L x W x H)
- Feed fold inward
- Reinforcement for stacking of packages
- Machine can be installed without forklift truck

## Package



# Questions & Remarks

